

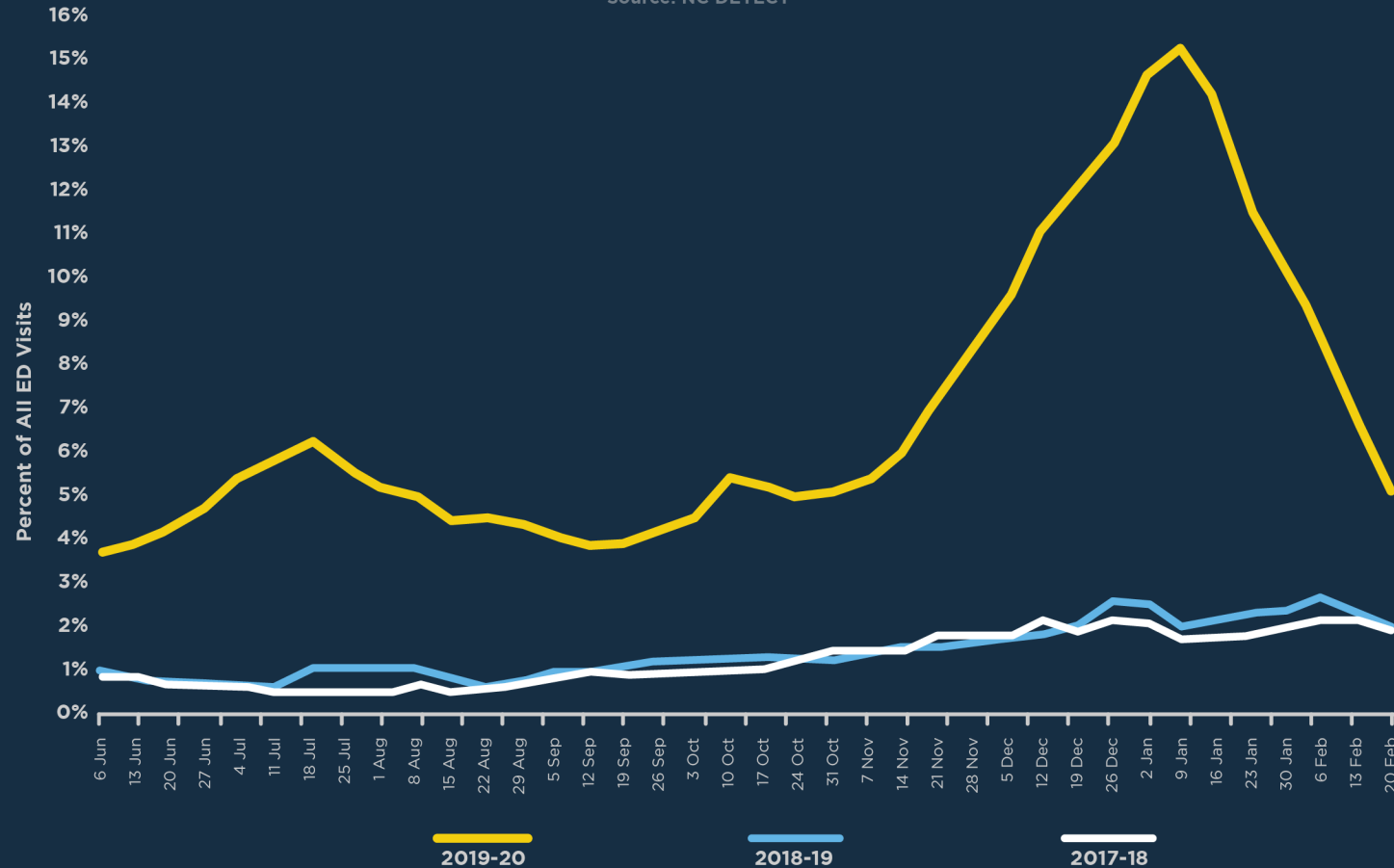
North Carolina

February 24, 2021

Trends

Trajectory of COVID-like Syndromic Cases

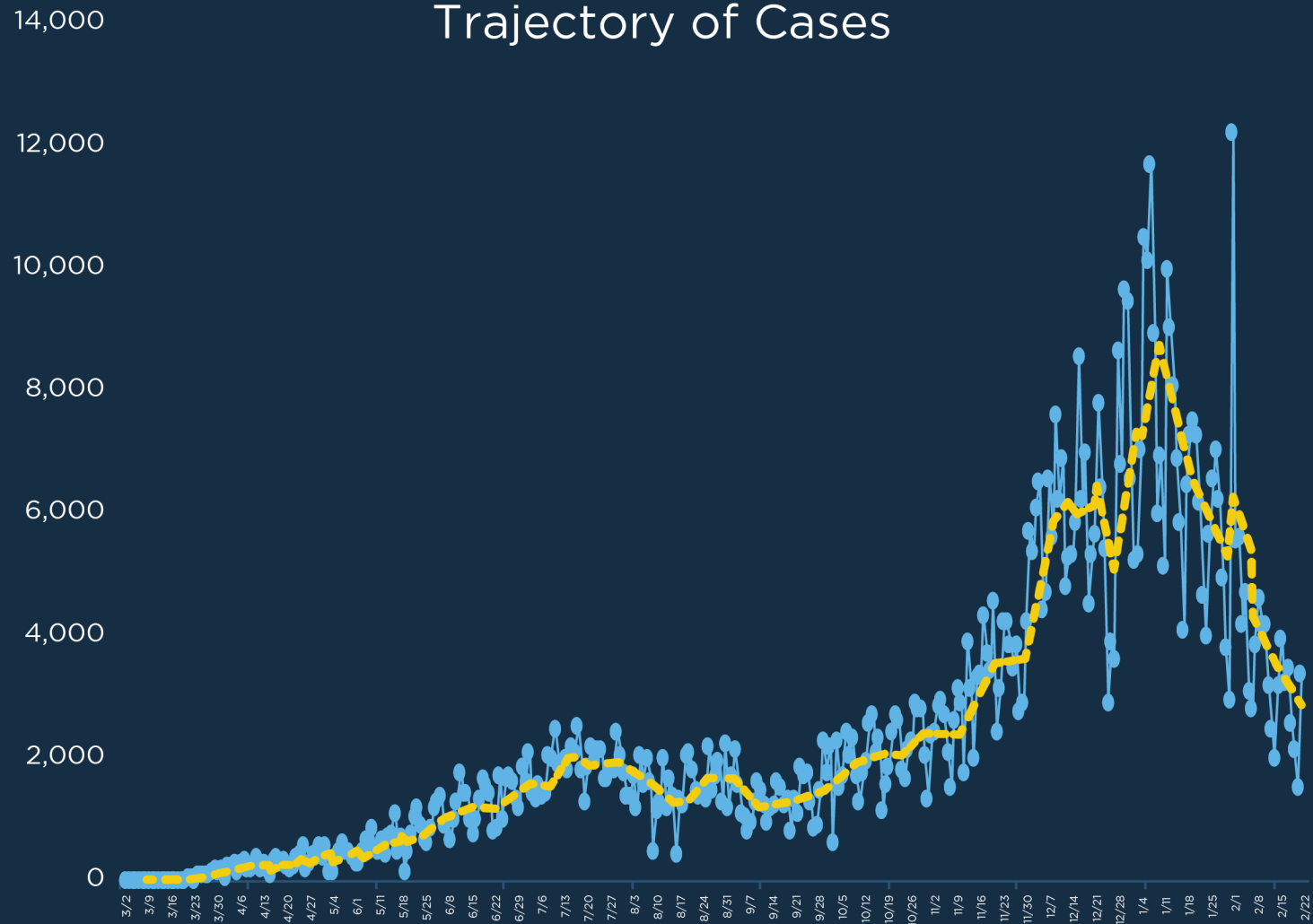
Source: NC DETECT



The percent of visits to the Emergency Department for COVID-like illness is **decreasing**.

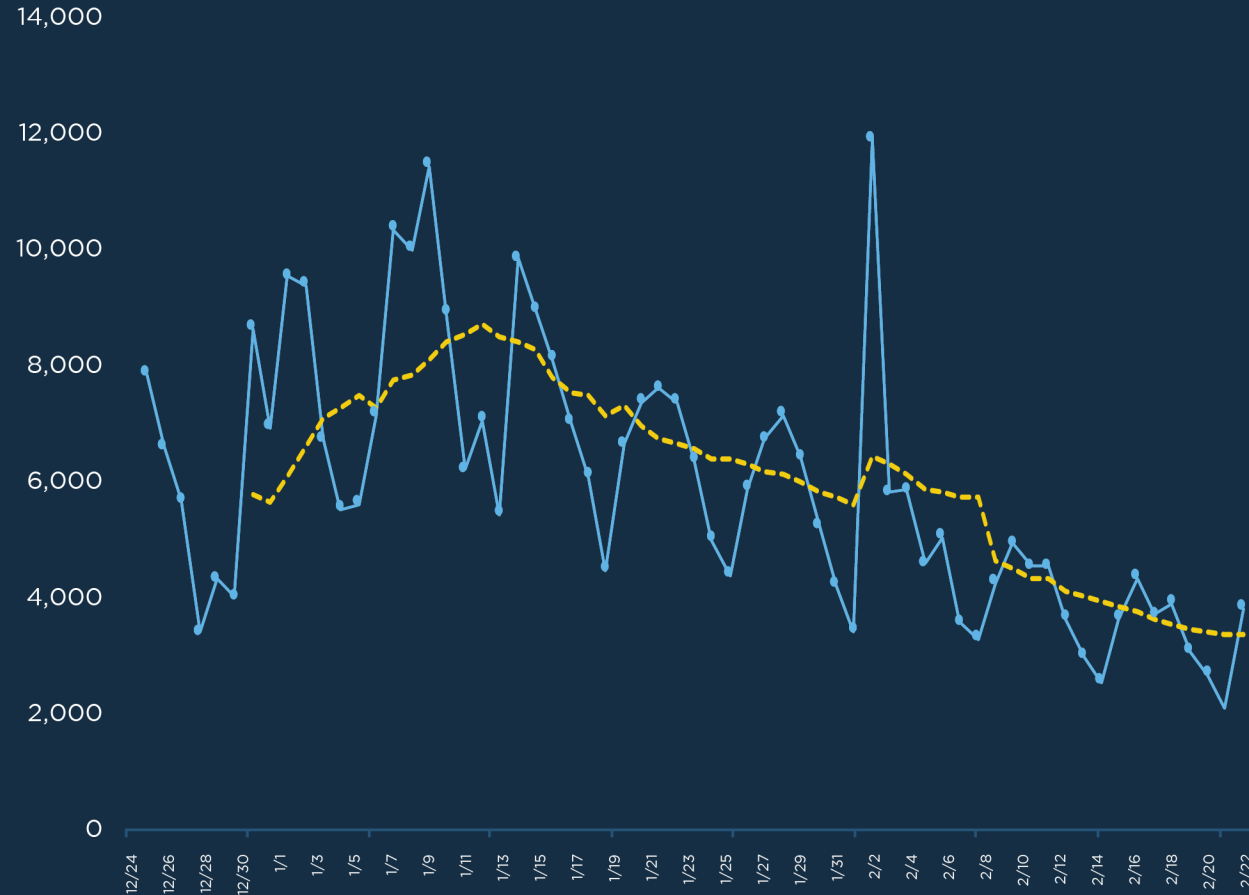
Trends

Trajectory of Cases



Trends

Trajectory of Cases from 12/24

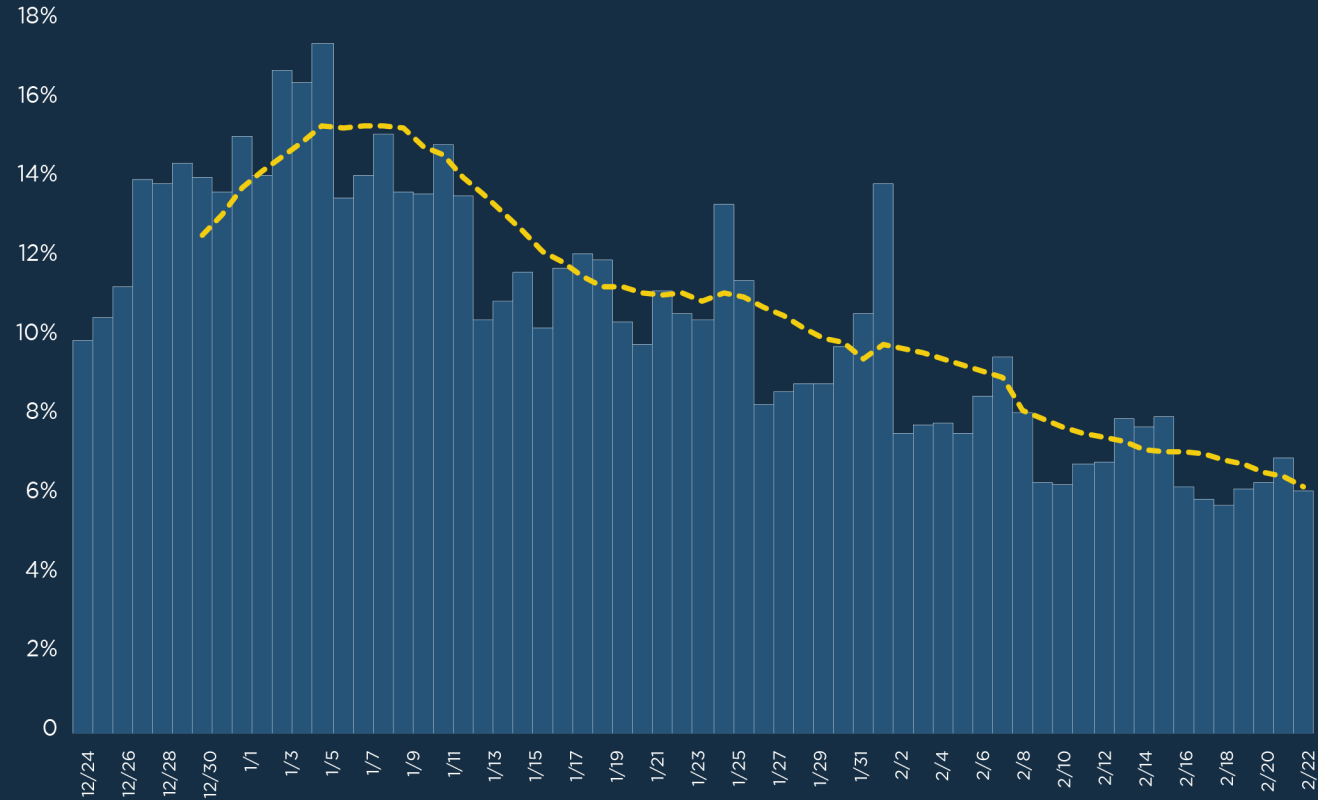


From 12/24, new cases in North Carolina are **decreasing**.

Trends

Trajectory % of Tests that are Positive

Percent positive for SARS-CoV-2 by date of report among ELR labs

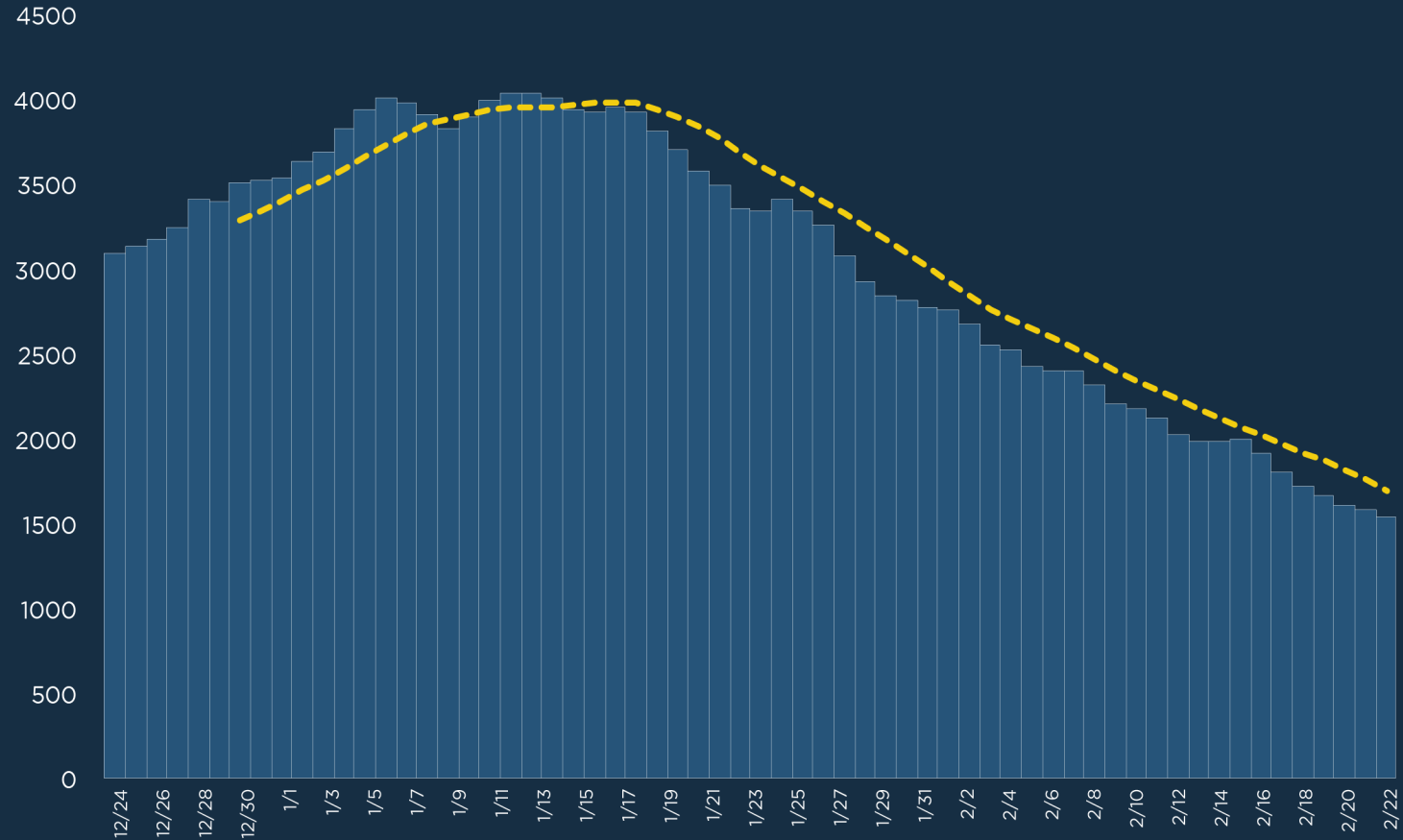


The trajectory of positive tests as a percentage of total tests is **decreasing**.

Trends

Trajectory of Hospitalizations

Daily Bed Census of COVID-19 Patients.



Hospitalizations are **decreasing**.

Where We Are Today

Trends

Trajectory of COVID-like syndromic cases



Trajectory of cases



Trajectory of positive tests as a percentage of total tests



Trajectory of hospitalizations



Capacity

Testing



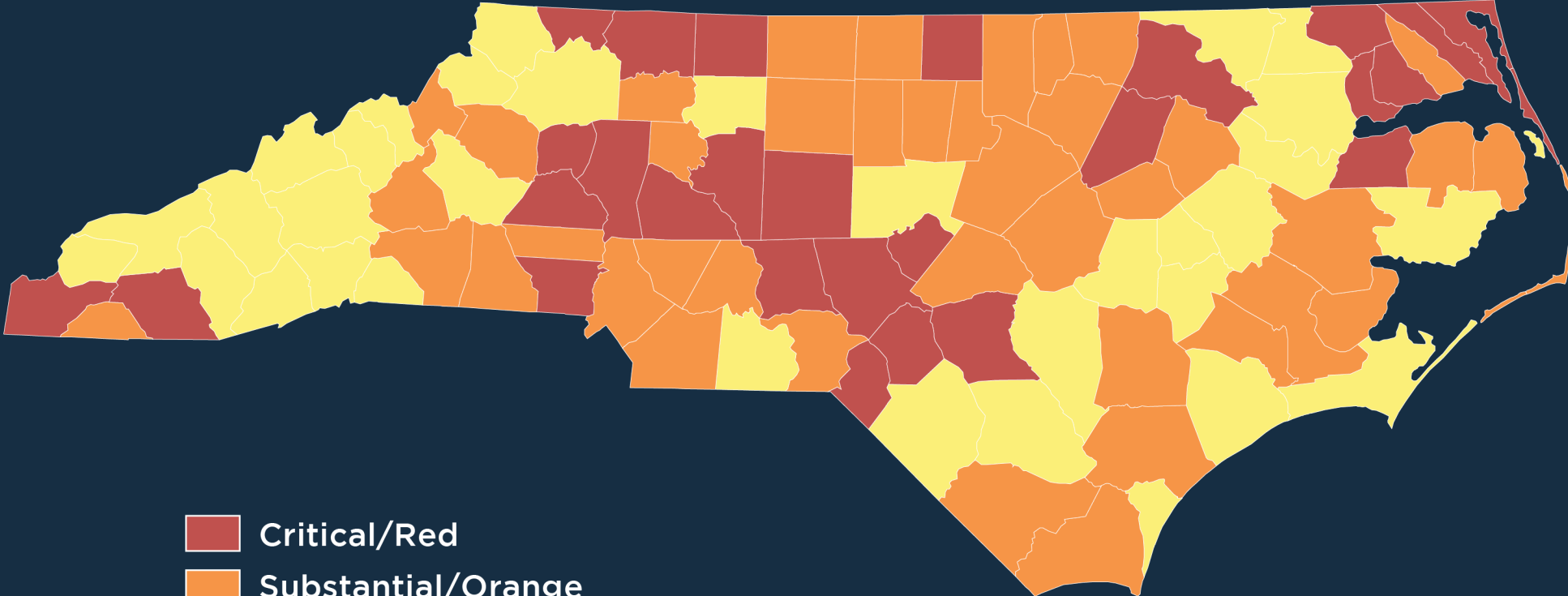
Contact Tracing






Personal Protective Equipment

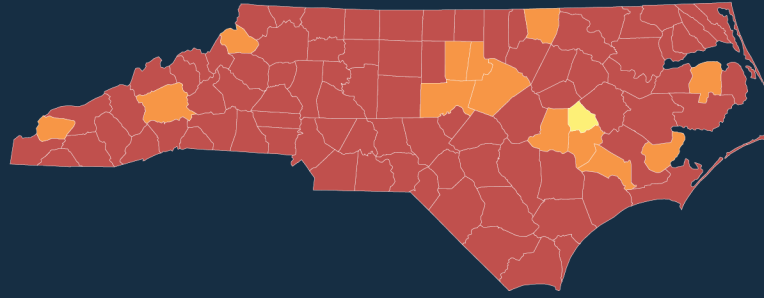


COVID-19 County Alert System

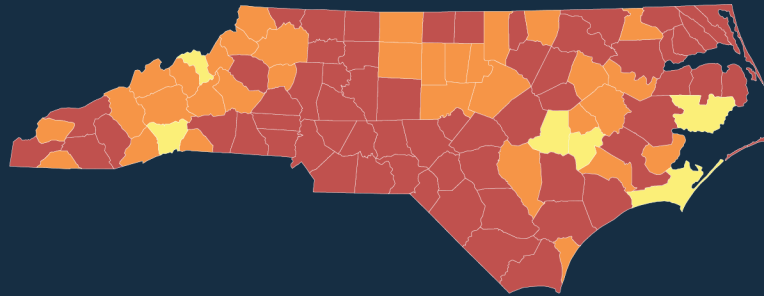


-  Critical/Red
-  Substantial/Orange
-  Significant/Yellow

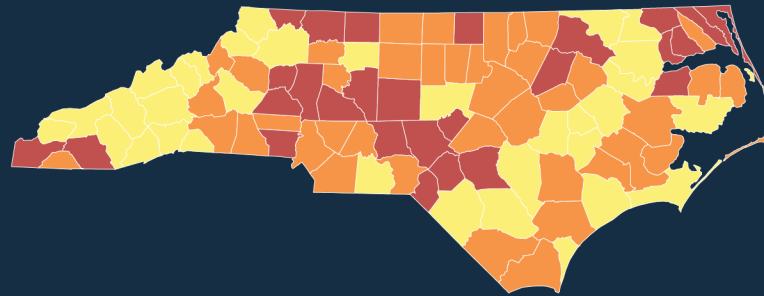
1/21/21



2/4/21



2/24/21



Executive Order 195 goes into effect
Friday, February 26, 2021 at 5pm:

Modified Stay at Home order lifted.

The Mandatory Mask Mandate
will not change.

Executive Order 195 (2/26/21)

Businesses operating at 50% occupancy

- Restaurants
- Breweries/Wineries
- Retail
- Gyms
- Museums
- Aquariums
- Barbers (+ other personal care)
- Pools
- Outdoor Amusement Parks

On-site service of alcohol extended until 11 p.m.

Executive Order 195 (2/26/21)

Businesses that were operating at 30% capacity will no longer have 100-person cap:

- Outdoor Sports Fields/Venues
- Outdoor Bars
- Outdoor Amusement Parks
- Other Outdoor Businesses

Executive Order 195 (2/26/21)

Some indoor business to open at 30% capacity with a cap of 250 people

- Bars and Taverns
- Indoor Amusement Parks
- Movie Theaters
- Indoor Sports Arenas

Larger indoor arenas with a capacity of more than 5,000 people allowed up to 15% capacity **with no cap** (with additional safety protocols).

Mass Gathering Limit increased to
25 indoors and 50 outdoors.
