

North Carolina

September 1, 2020

Trends - Our Metrics

We are looking at a combination of metrics over the last 14 days.

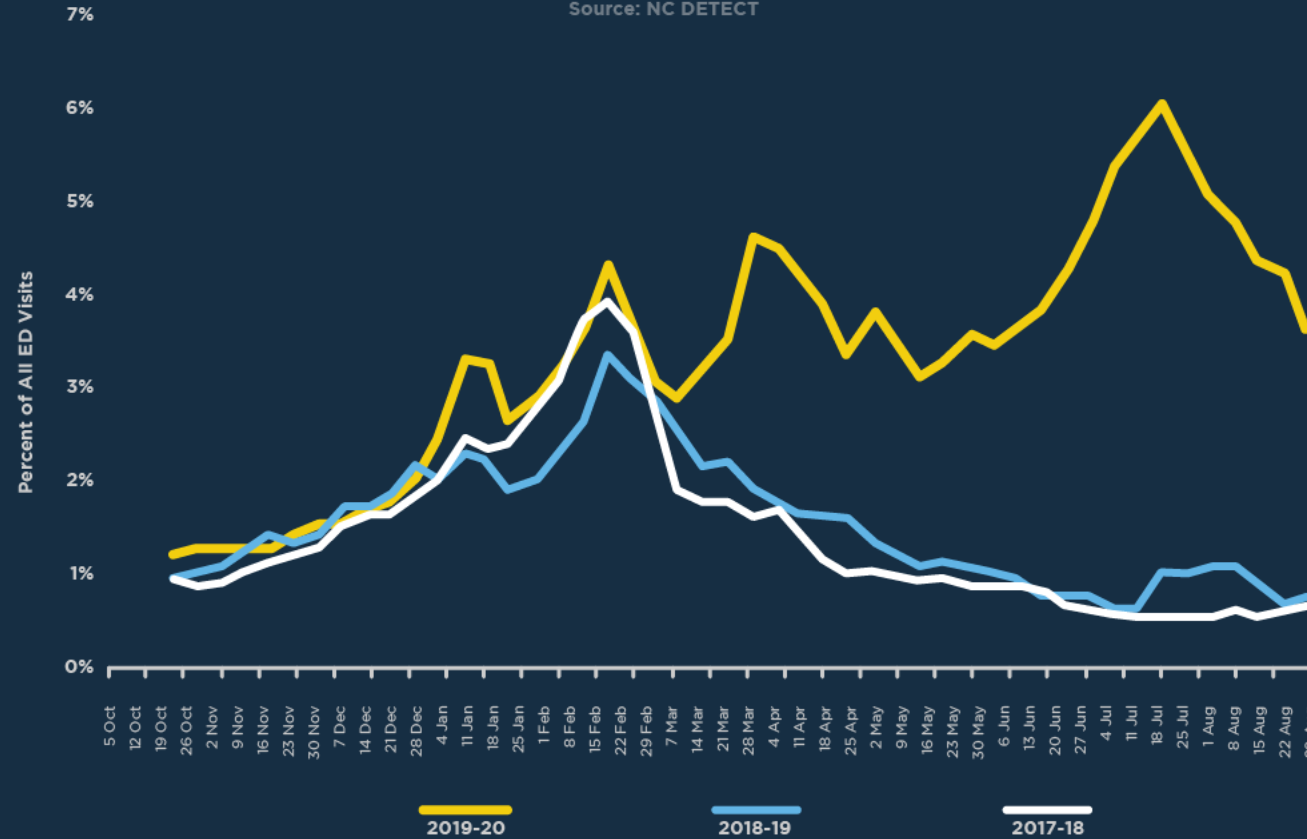
- COVID-like syndromic cases
- Lab-confirmed cases
- Positive tests as a percentage of total tests
- Hospitalizations

We are also looking at our capacity for testing, tracing and personal protective equipment.

Trends

Trajectory of COVID-like Syndromic Cases

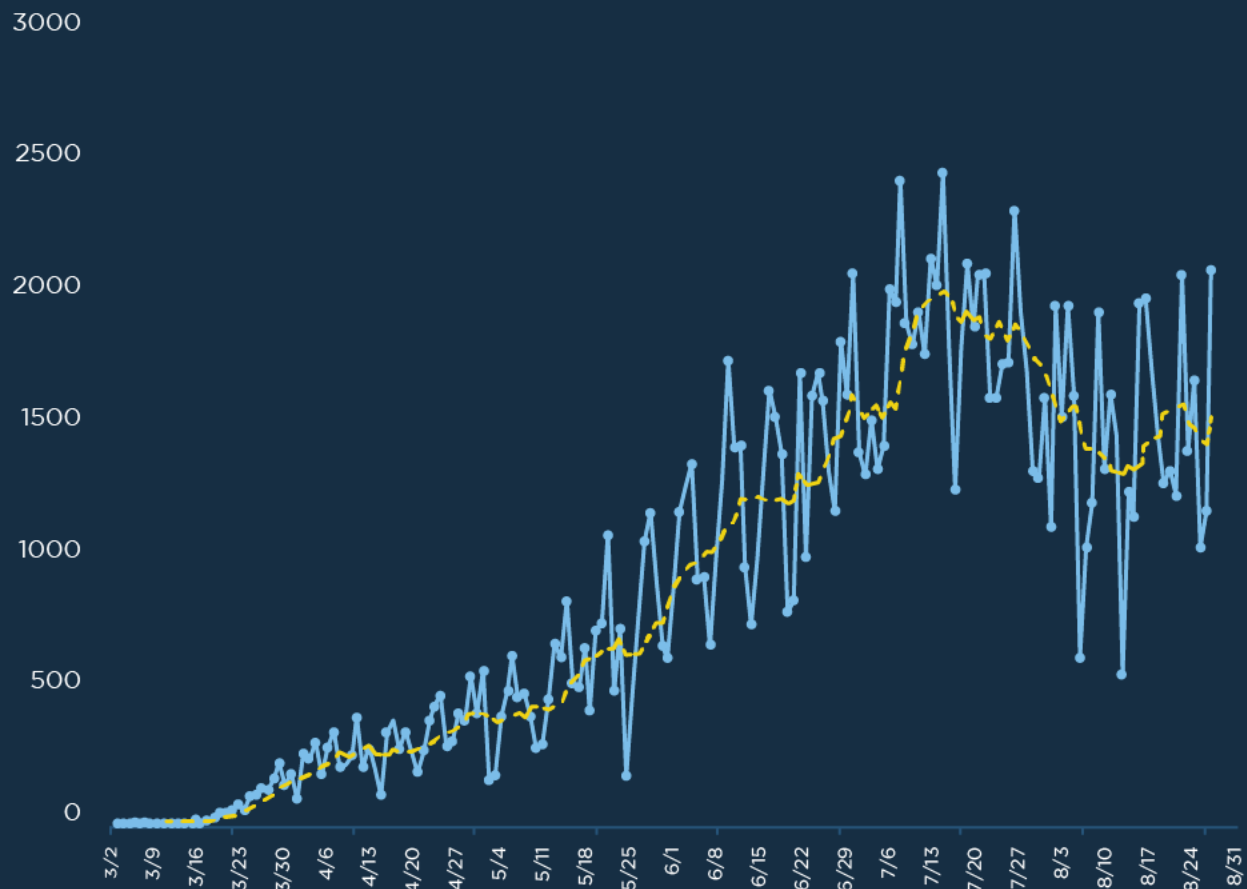
Source: NC DETECT



The percent of visits to the Emergency Department for COVID-like illness is **declining**.

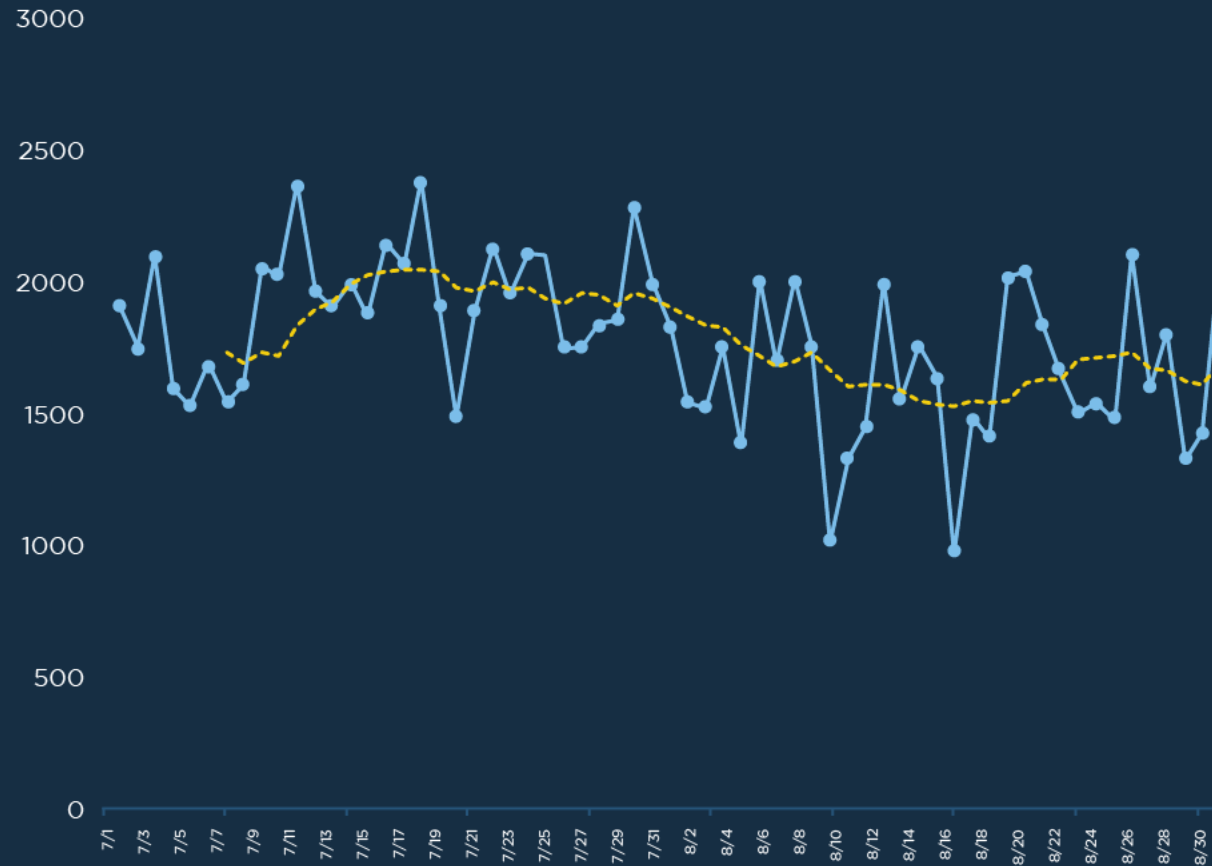
Trends

Trajectory of Cases



Trends

Trajectory of Cases from 7/1

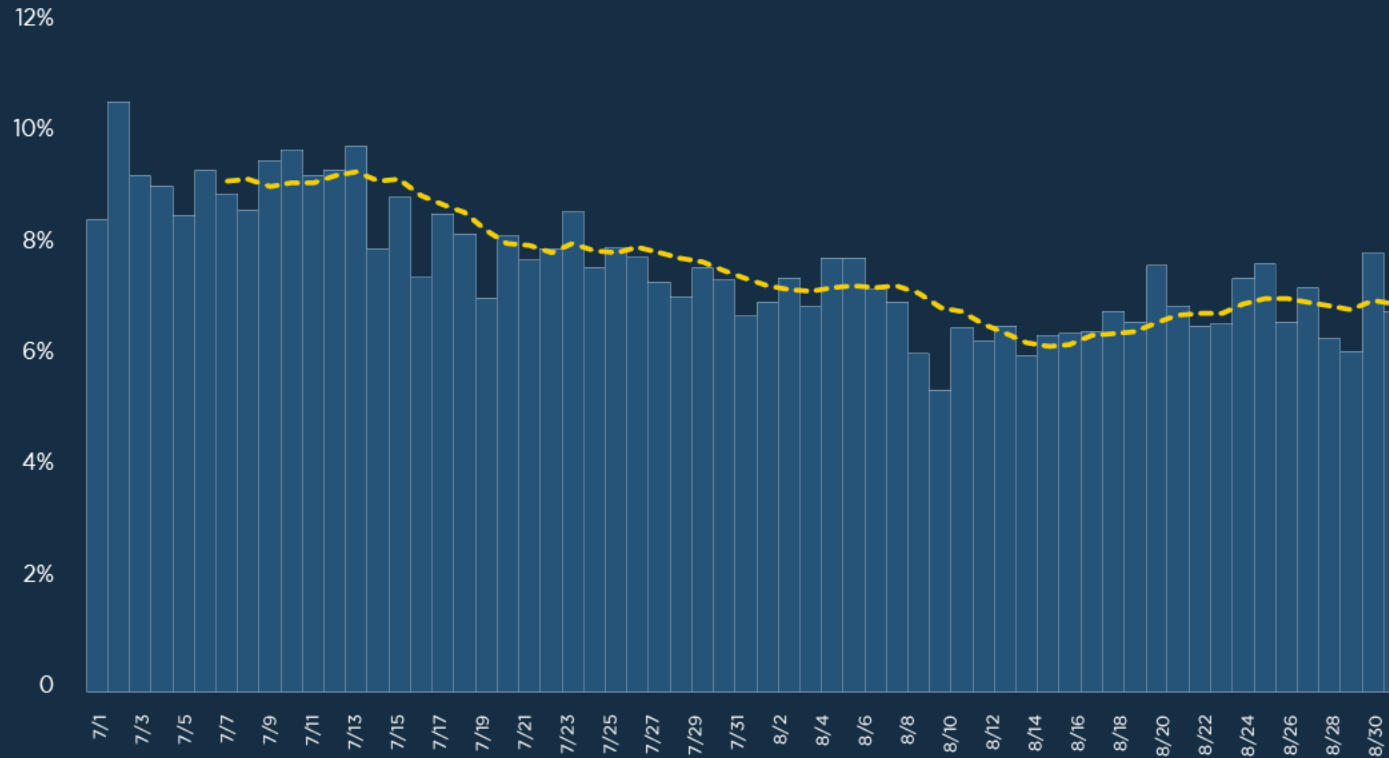


From 7/1, new cases from in North Carolina are **stable**.

Trends

Trajectory % of Tests that are Positive

Percent positive for SARS-CoV-2 by date of report among ELR labs

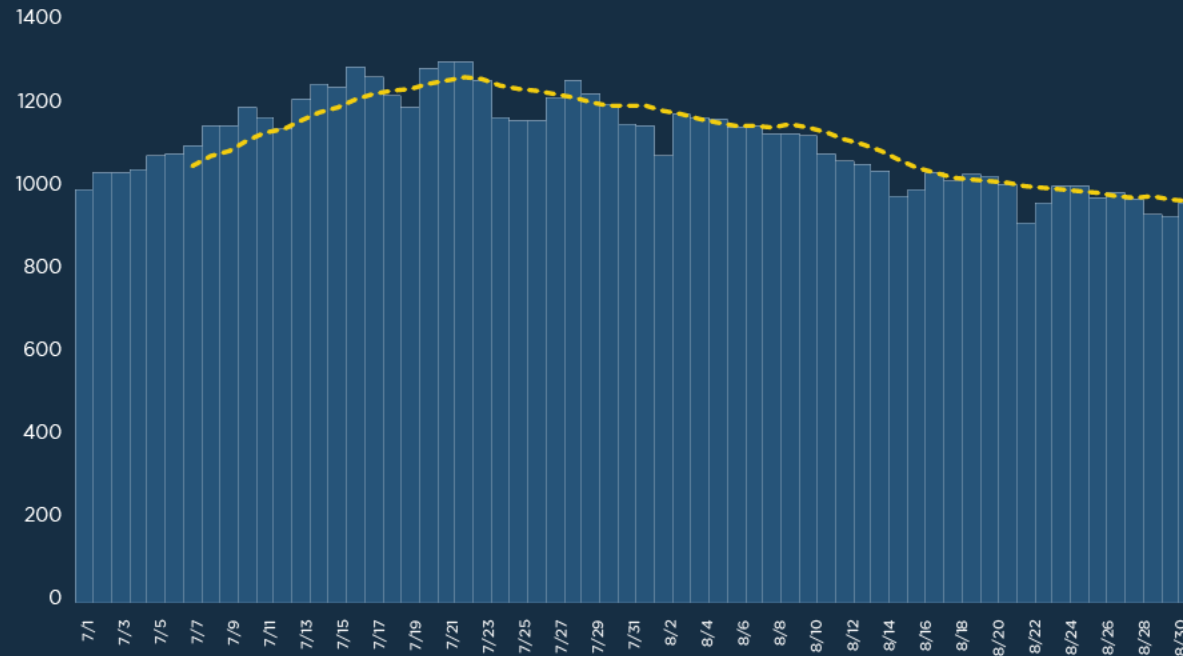


The trajectory of positive tests as a percentage of total tests is **stable**.

Trends

Trajectory of Hospitalizations

Daily Bed Census of COVID-19 Patients.



Hospitalizations are **declining**.

Where We Are Today

Trends

Trajectory of COVID-like syndromic cases



Trajectory of cases



Trajectory of positive tests as a percentage of total tests



Trajectory of hospitalizations



Capacity

Testing



Contact Tracing



Personal Protective Equipment



Safer At Home Phase 2.5
Friday, September 4 at 5 pm

Safer At Home Phase 2.5

Here's what will change:

- **Limits on mass gatherings will increase to 25 people indoors and 50 people outdoors.**
- **Playgrounds will be allowed to open.**

- **Museums and aquariums can open at 50 percent capacity.**

Gyms and other indoor exercise facilities can open at

- **30 percent capacity.**

- **The age requirement for mask wearing will include children down to age 5.**
- **Capacity limits at restaurants and personal care businesses like hair and nail salons will stay the same.**

Some places will remain closed:

- **Bars**
- **Nightclubs**
- **Movie theaters**
- **Indoor entertainment**
- **Amusement parks**

Large venues will still be subject to the mass gathering limits.

We know that big gatherings are among the most dangerous settings for transmission.

The 11 pm curfew on alcohol sales at restaurants has been extended to **October 2.**