

North Carolina

September 30, 2020

Trends - Our Metrics

We are looking at a combination of metrics over the last 14 days.

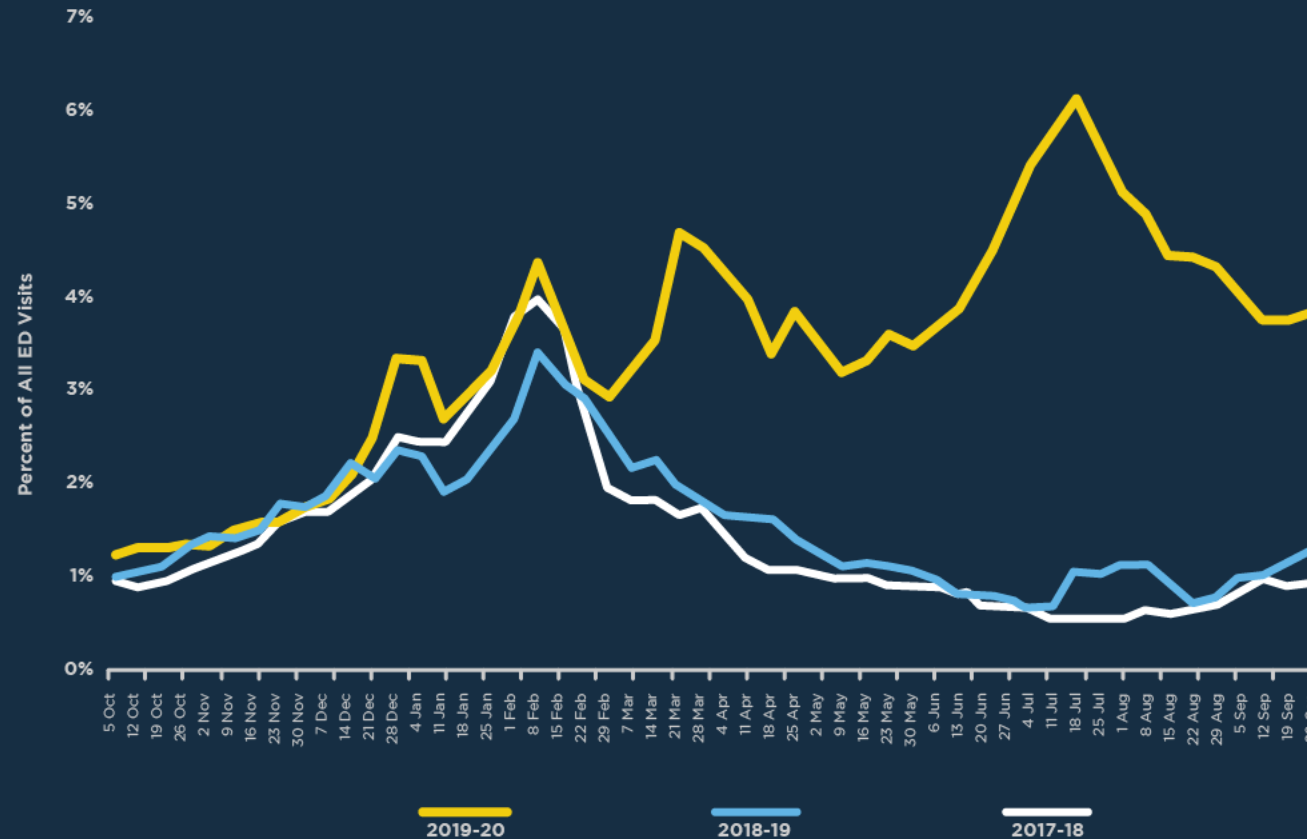
- COVID-like syndromic cases
- Confirmed cases
- Positive tests as a percentage of total tests
- Hospitalizations

We are also looking at our capacity for testing, tracing and personal protective equipment.

Trends

Trajectory of COVID-like Syndromic Cases

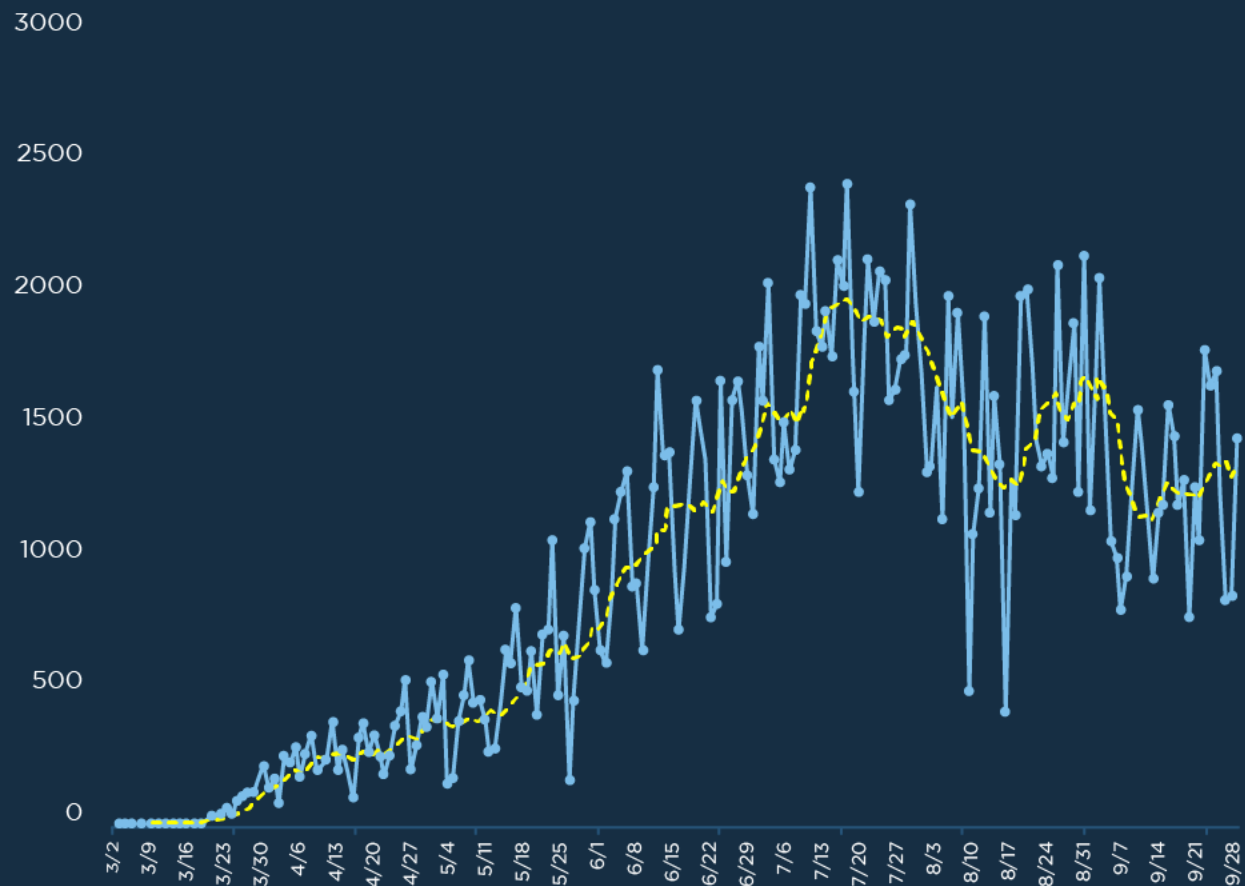
Source: NC DETECT



The percent of visits to the Emergency Department for COVID-like illness is **slightly increasing**.

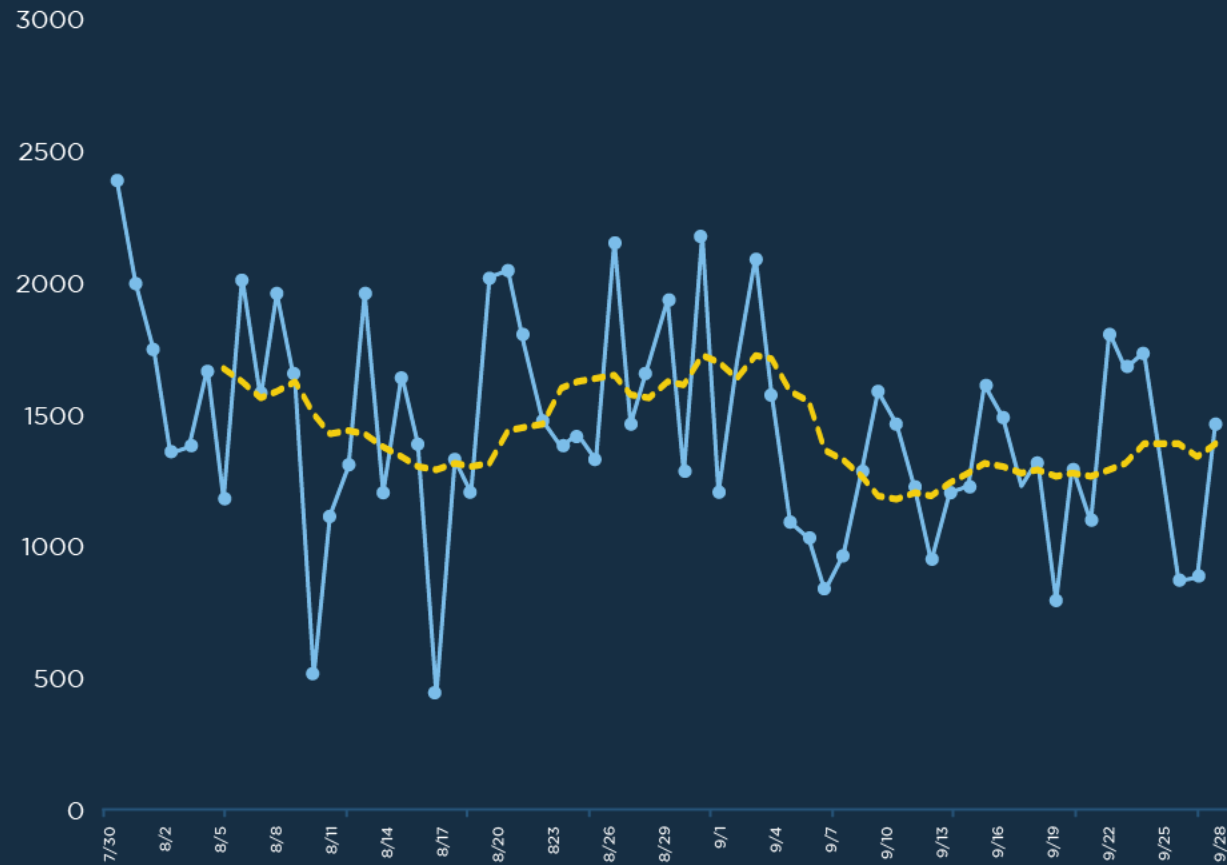
Trends

Trajectory of Cases



Trends

Trajectory of Cases from 7/30

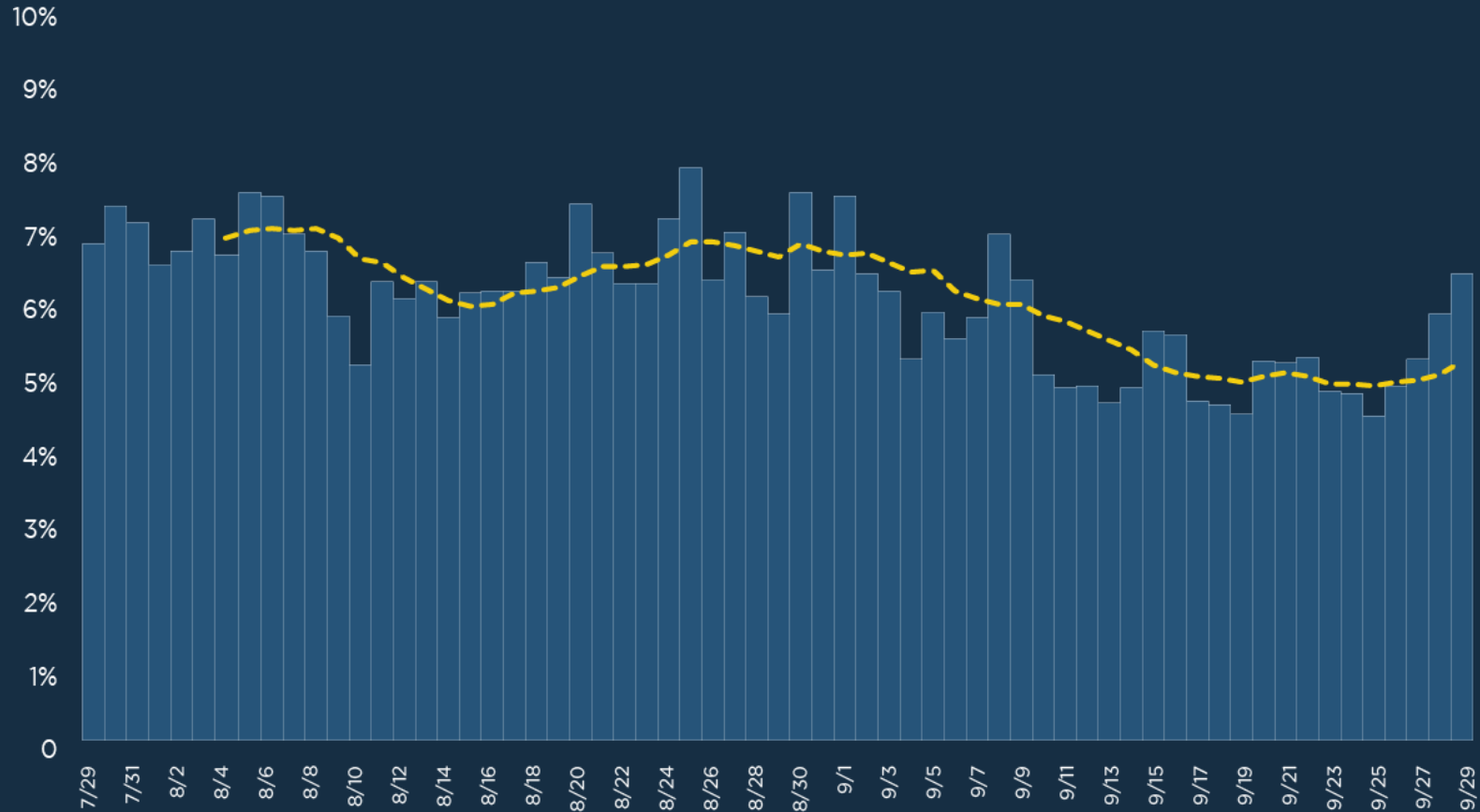


From 7/30, new cases in North Carolina are **level**.

Trends

Trajectory % of Tests that are Positive

Percent positive for SARS-CoV-2 by date of report among ELR labs

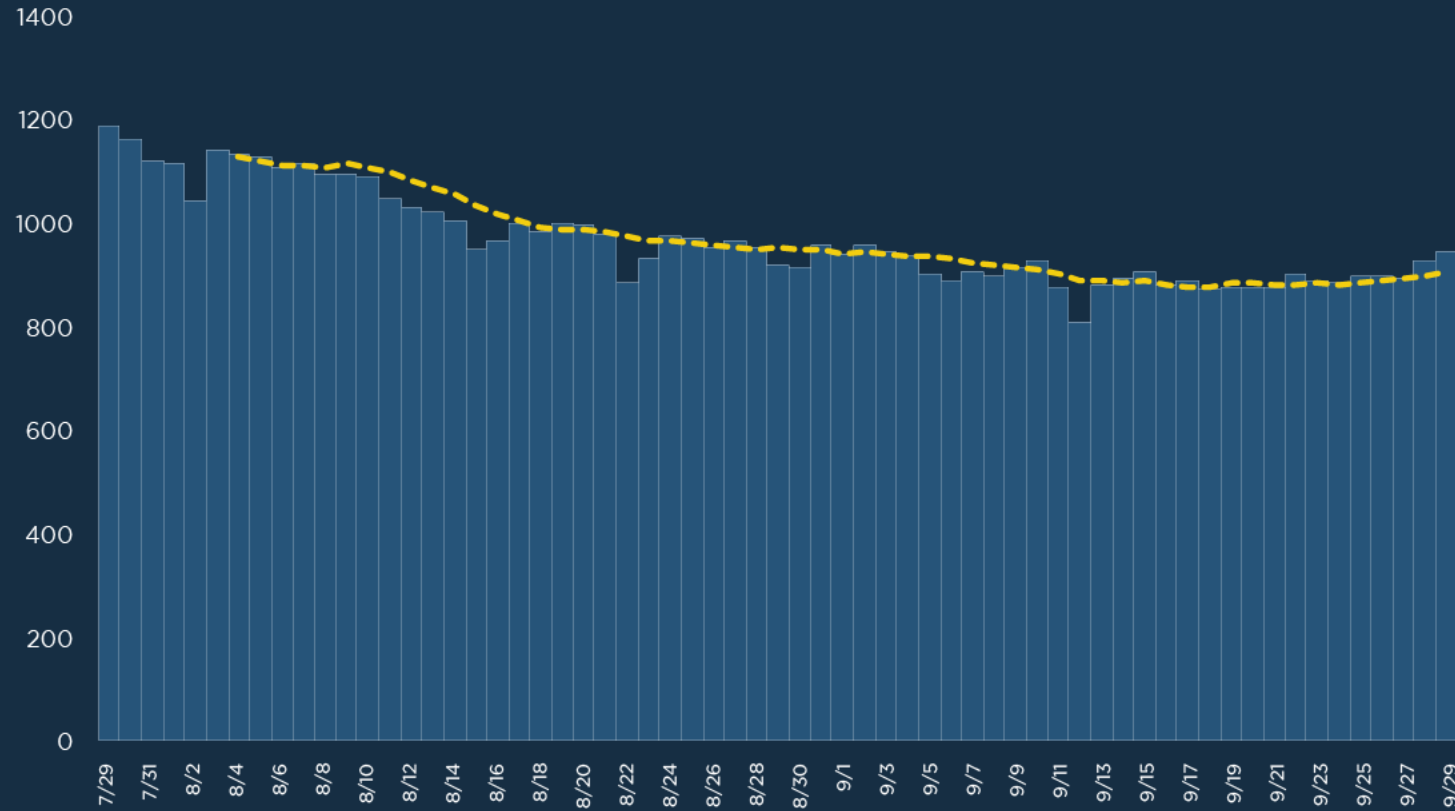


The trajectory of positive tests as a percentage of total tests is **level**.

Trends

Trajectory of Hospitalizations

Daily Bed Census of COVID-19 Patients.



Hospitalizations are **level**.

Where We Are Today

Trends

Trajectory of COVID-like syndromic cases



Trajectory of cases



Trajectory of positive tests as a percentage of total tests



Trajectory of hospitalizations



Capacity

Testing



Contact Tracing



Personal Protective Equipment



North Carolina Phase 3
Friday, October 2, at 5 pm

At-risk Population:

Safer at home

All North Carolinians:

A face covering is mandatory
for those over the age of 5.

Phase 3

Large outdoor venues (seating > 10,000)

7% occupancy

Smaller outdoor venues

30% of outdoor capacity, or 100, whichever less

Movie theaters & conference centers

indoor at 30% of capacity, or 100, whichever less

Bars

outdoor only at 30% of capacity, or 100, whichever less.

Phase 3

Outdoor amusement parks

30% occupancy

Mass gathering limits remain at 25 indoors and 50 outdoors

The current alcohol sales curfew will be extended.