

NC Early Childhood Action Plan Progress Toward Change for North Carolina's Young Children and their Families

Rebecca Planchard, Senior Early Childhood Policy Advisor
NC Department of Health and Human Services

**NC Early Childhood Advisory Council Meeting
December 6, 2019**



North Carolina Early Childhood Action Plan

Dr. Jack Shonkoff, NC Early Childhood Summit, Feb. 2019

“I’m going to make a bold assertion here. The [early childhood] field doesn’t have as bright a future going forward if we just rest on 20th century knowledge and advocacy, and we don’t take advantage of the revolution that’s going on in science right now. **We ignore that at our peril.”**



For footage from the entire day’s events, visit ncdhhs.gov/early-childhood

Early Childhood Action Plan Goals At-a-Glance

1. **Healthy Babies**
2. Preventive Health Services
3. Food Security
4. Safe & Secure Housing
5. **Safe & Nurturing Relationships**
6. **Permanent Families for Children in Foster Care**
7. **Social – Emotional Health and Resilience**
8. **High – Quality Early Learning**
9. On Track for School Success
10. Reading at Grade Level

Bold = priority goal





What's Our Progress on
Implementation?

Partners Across the State



- **Statewide Non-Profits and Advocates Aligning Efforts: Think Babies, Social Emotional Workgroup with NC Early Childhood Foundation, and others**
- **Diverse County Leaders Aligning Efforts: Yadkin, Transylvania, Durham, Cabarrus, and others**
- **Research Institutions and Higher Education Aligning Efforts: Duke University, UNC-CH, Community Colleges Across NC, and others**

A few examples of new NCDHHS-supported initiatives

- **Governor Cooper Executive Order for paid parental leave for state employees**
- **\$10 million Maternal Health Innovation Grant to address disparities in maternal health and improve maternal health outcomes**
- **\$10 million Victims of Crime Act Grant through the Governor's Crime Commission for Safe Babies Court Teams and to expand Triple P to relatives and foster parents supporting children involved with Child Protective Services**
- **\$4.5 million in Preschool Development Grant funding, supporting access to early childhood education across the state for vulnerable and underserved families; new grant application notice coming soon**
- **\$3 million to expand capacity at three perinatal/maternal substance use disorder residential treatment programs**
- **\$1.4 million in funding to expand Buncombe County's Sobriety Treatment and Recovery Teams (START) program for parents and children affected by child maltreatment and parental substance use disorders**
- **\$1.1 million in funding to support integration of pediatric and maternal mental health into primary care, including consultation line and telepsychiatry**

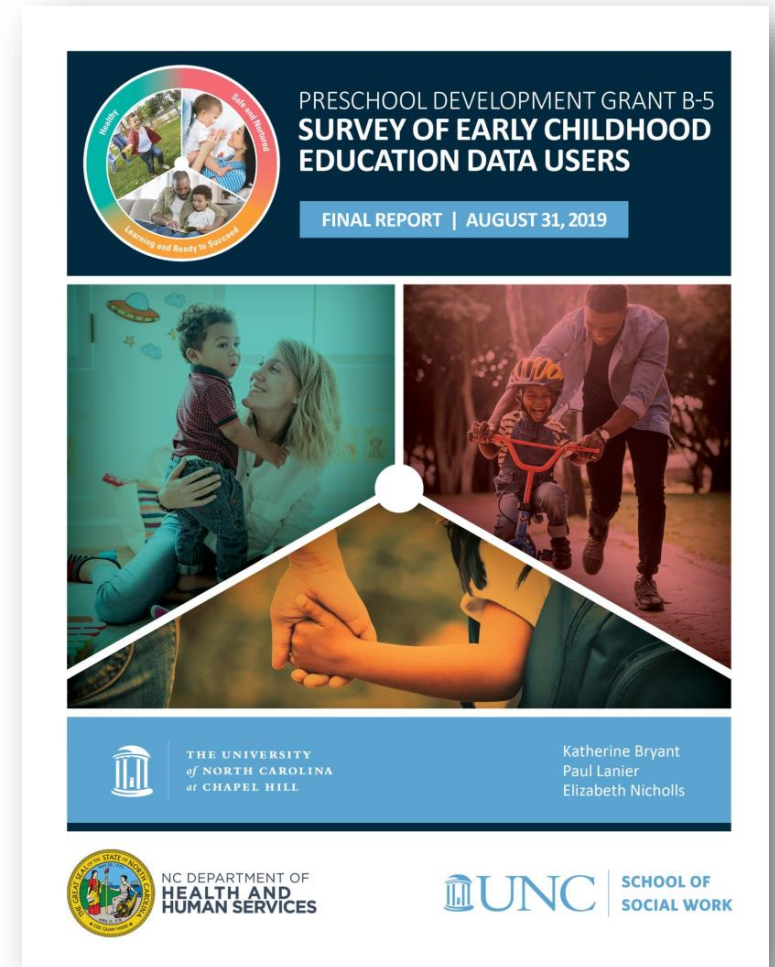


NCDHHS Cross-Divisional Fall Workshops
on Early Childhood Action Plan Goals

Recent Report by UNC – CH on Early Childhood Data Users

- Survey drafted, piloted, and fielded in May 2019
- Distributed widely via email lists, social media, and fliers at in-person events
- Hundreds of responses
- **Recommendation Four: Data transparency at the state level. Provide accessible and timely information to improve access to state administrative data.**

Read the full report: <http://bit.ly/2qA8m8l>



County Level Data Reports – Went live in November

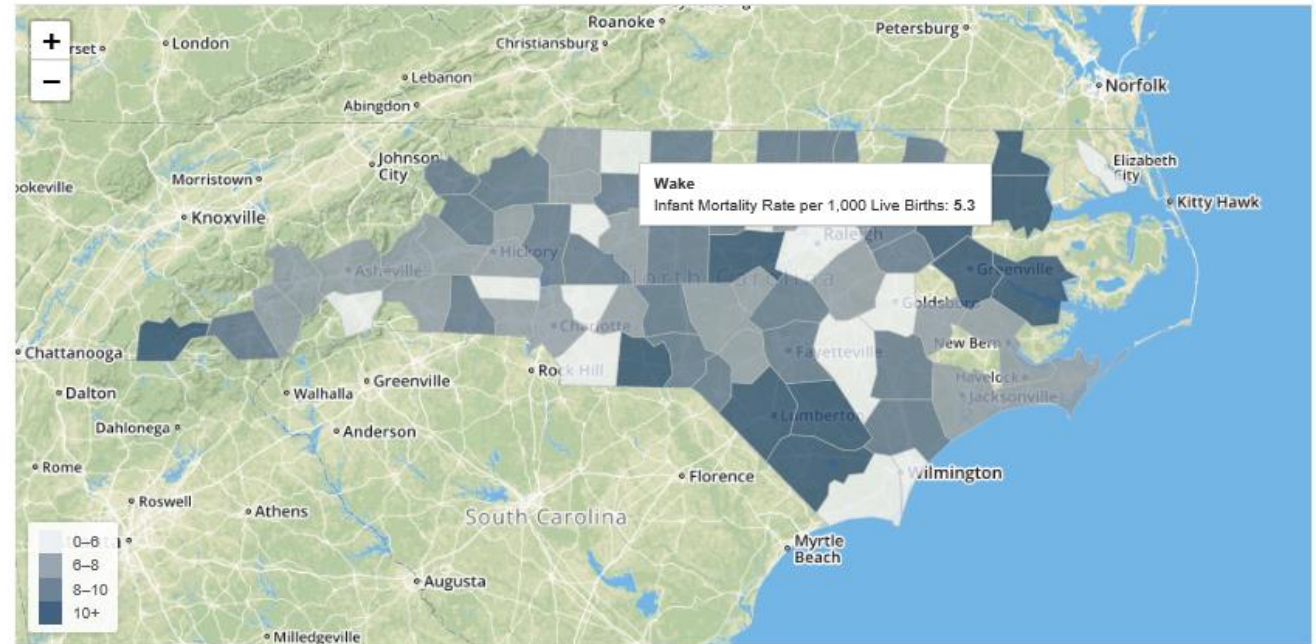
- Requests from counties for easier access to the data prioritized in the plan at the local level
- Desire to use county level data for:
 - Strategic planning
 - Peer county comparisons
 - Meeting existing data requirements for other local assessments
- Expressed desire to have data available in an easily accessible, printer-friendly report format



Early Childhood Action Plan: Statewide Data Dashboard

- Data on over 50 measures
- Interactive
- 2020 updates in progress
- Open to the public
- Visit ncdhhs.gov/early-childhood

Infant Mortality Rates in North Carolina by County, 5-year Estimates 2013-2017



Data Source: State Center for Health Statistics (SCHS), Division of Public Health (DPH), NC Department of Health and Human Services (NCDHHS)

*Technical note: The above scale represents infant mortality rates, calculated as the number of infant (under 1 year of age) deaths divided by the total number of live births during the same time period. Rates are shown in infant deaths per 1,000 live births. Unshaded counties are those that had infant mortality rates based on small numbers (fewer than 10 deaths) and were therefore considered unstable.



Let's **BE BOLD** for North Carolina's Young Children!

Visit ncdhhs.gov/early-childhood



North Carolina Early Childhood Action Plan