



**North Carolina School Nurses,
Specialized Instructional Support Personnel**
Governor's Commission on Access to Sound Basic Education

Ann O. Nichols, MSN, RN, NCSN
State School Health Nurse Consultant/Nurse Supervisor
January 17, 2019



Information Covered

- North Carolina School Nurse Workforce
- School Nurse Role as a Student Support Team Member
- Overview of Student Services Provided by School Nurses
- Services Provided via District School Nurse vs School Health Center
- Challenges and Barriers in School Nursing Service Provision

Data Source: NC School Health Services Survey

1997 to present

100% voluntary

Primary purpose – local program growth and improvement

December - workforce and programmatic data

Secondary purpose – stakeholder interest in school health

June - aggregated clinical services

<https://publichealth.nc.gov/wch/stats/>

3

School Nurse Credential and Support

The School Nurse is a Registered Nurse

- NC Board of Nursing defines work activities as those of a Registered Nurse
- School Nurse Certification within three years of hire, regardless of employer
- Certification requires BSN, documented hours of experience and successful exam completion

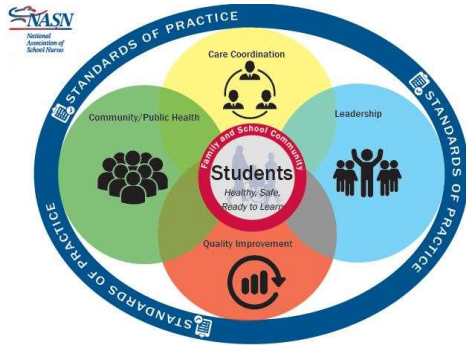
The School Nurse Role is Isolated

- Must rely on competence and experience in absence of other nurses
- Only 33% have a nursing supervisor for support or questions
- Complexity of the role is often poorly understood by non-nursing administrators

4

Team Based Role to Keep Students Healthy and Ready to Learn

21st Century School Nurse Practice Model



Whole School, Whole Community, Whole Child



5

Need for School Nurses

Improved outcomes for preterm delivery children

Numbers of students with chronic health conditions

Local community and cultural impacts on student population health

Complexity of health procedures performed in schools

Federal law requirements for student health service in schools

State statute requirements for student health services in schools

Student mental health needs

Source: [Legislative Program Evaluation Division Study, 2017](#)

6



Each school year 15 to 20 percent of our NC student population receives nursing services in school related to an active health condition.

On average, a NC classroom can expect to include:

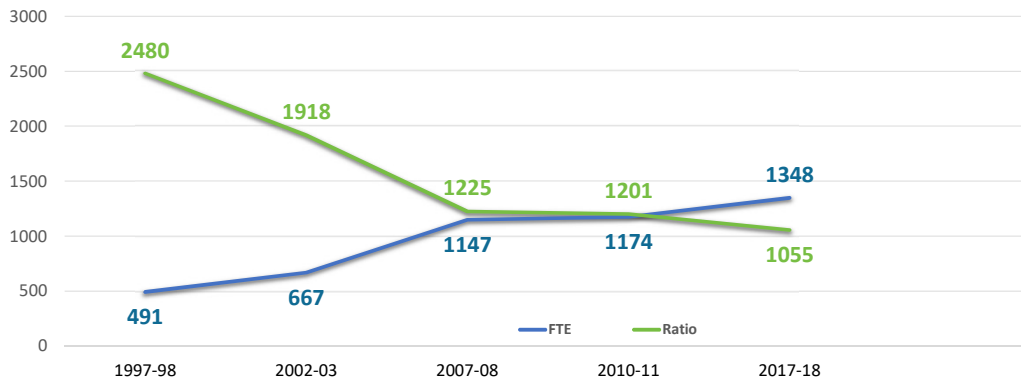
- 2 students taking daily medication in school
- 1 student with ADD/ADHD
- 1 student with a life-threatening allergy
- 2 students with asthma
- 2 students with a less common complex health condition
- 4 students with mental/behavioral health related issues*

*www.nami.org

Major School Nurse Service Categories

Develop, implement, oversee Individual Health Care Plans and Emergency Action Plans for students with acute, chronic and/or life-threatening conditions.	Respond to emergency and first aid situations. Assist with district response planning and provide instruction for first responders.	Prevent, monitor for, and respond to communicable disease outbreaks. Provide related staff instruction.
Implement and oversee district medication administration process. Audit and correct issues and provide staff instruction.	Implement and oversee district screening programs for health conditions that impact education. Assure treatment and address access to care issues.	Provide health education and health counseling for health promotion, mental health, disease prevention, etc.
2,203,512 School Nurse Encounters during 2017/2018	Assure completion and reporting of mandated student health requirements and processes, such as immunizations.	89% of students seen by a school nurse are returned to class.

NC School Nurse Ratio/FTE Progress



9

School Nursing Service

- Direct district or district contracted employee; SISP Team member
- Subject to district policy and procedure
- Population focus – total school and school health program
- Serves all students
- Health promotion through whole child focus
- Assures all core health services in schools
- Record privacy protected under Family Education Right to Privacy Act (FERPA). Parental consent required for sharing with School Health Center

School Health Center

- Employee of agency owning/operating the clinic/medical practice
- Subject to agency policy and contract
- Individual student medical issue/need focus for center registered students
- Serves center enrolled students
- Fee for service for diagnosis and treatment
- Specific billable services provided
- Record privacy protected under Health Insurance Portability & Privacy Act (HIPPA). Parental consent required for sharing with school

10

School Nurse Workforce Challenges and Barriers

- Service to multiple schools limits ability to fully function on student service teams
- Lack of implementation of full scope of Registered Nurse practice
- Non-competitive school nurse salaries
- Lack of funding sources to support degree completion for ADN school nurses
- Absence of a standardized record documentation platform for provision of health services
- Schools experiencing staffing challenges often use school nurse time for non-nursing related purposes

11

Resources

- [DPH School Health Services Surveys](#)
- [School Nurse Program Evaluation Division Study, 2017](#)
- [Five Ways a School Nurse Benefits the School](#)
- [Cost Benefit Study of School Nursing Services](#)
- [The Case for School Nursing](#)
- [School Nurses Battle Chronic Absenteeism](#)
- [American Academy of Pediatrics Position Statement on Role of the School Nurse](#)
- [Nursing Workforce: Trends and Challenges](#)
- [DPHSchoolHealthCenterFY18](#)

12

Questions and Comments

Ann.Nichols@dhhs.nc.gov